

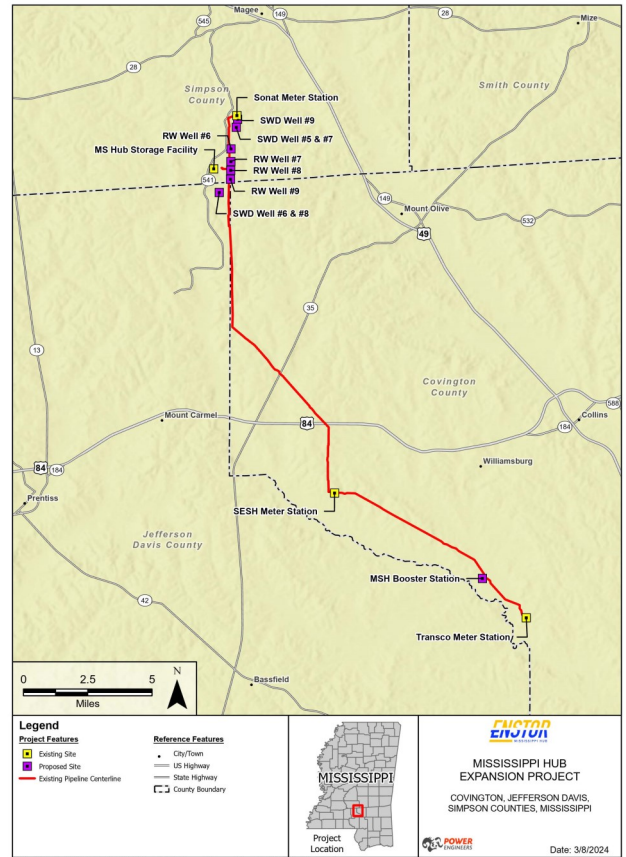
MISSISSIPPI HUB EXPANSION PROJECT FACT SHEET

Project Description and Location

Enstor Gas, LLC and its affiliated entities (Enstor), the largest independent underground natural gas storage operator in North America, own and operate six storage facilities located in the Gulf Coast and Southwest regions of the US. Mississippi Hub, LLC (MS Hub), an affiliate of Enstor, located near the town of Magee, Mississippi, plans to expand its existing natural gas storage facility to enhance energy security, reliability, and flexibility in the Gulf Coast and Southeast market areas.

Project Objectives

MS Hub plans to construct, own, and operate three additional natural gas storage caverns, each with approximately 10 Bcf of working gas capacity. The project also includes the construction of compression, dehydration, saltwater disposal wells, and other ancillary facilities to accommodate the proposed expansion. Upon completion, the MS Hub Expansion Project is expected to add up to 33.5 Bcf of working gas capacity and add up to 0.7 MMDth/day of injection capacity, and up to 1.0 MMDth/day of delivery capacity, that will be capable of providing high-turn services to the market.



	Existing Service	Post-Expansion
In-Service Date	2010	2028/2031
Number of Caverns	3	6
Working Gas Capacity (Bcf)	22.4	55.9*
Max Daily Withdrawal - MDth/day	1,200	2,200
Max Daily Injection - MDth/day	480	1,180
Pipeline Interconnects	Transco, Sonat, SESH	



*Including 3.5 Bcf from expansion of existing caverns.

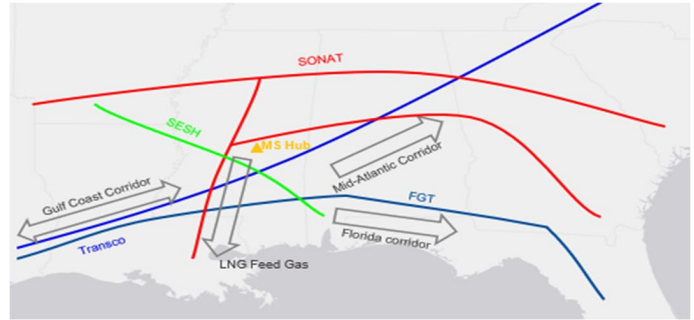


MISSISSIPPI HUB EXPANSION PROJECT FACT SHEET

Market and Community Benefits

The expansion project will provide significant benefits to Enstor, its customers, and the region, including:

- Enhancing energy security, reliability, flexibility, and diversity to customers in Mississippi and surrounding areas.
- Providing increased capabilities to multiple natural gas supply sources and markets to improve price competitiveness.
- Supporting economic development and job creation in Mississippi through direct and indirect employment opportunities during construction and operation.
- Generating increased tax and other fee revenues to local, state, and federal governments.



MS Hub is a highly flexible salt dome storage facility connected with one of the most liquid markets through its interconnects with Southern Natural Gas Company (Sonat), Southeast Supply Header (SESH), and Transcontinental Gas Pipe Line (Transco).

Proposed Project Schedule

The expansion project requires federal, state, and local permits and approvals, as well as public and stakeholder input. MS Hub is committed to conducting the expansion project in a safe, responsible, and environmentally sound manner, and to minimizing impacts to landowners, communities, and natural resources. MS Hub plans to place the expansion project into service in 2028/2031, subject to change depending on permitting, engineering, procurement, construction, and other factors.

Enstor Community Outreach and Engagement

- Project announced Nov. 15, 2023
- Adjacent landowners and community stakeholders notified via Certified Mail and invited to public open house
- Open house held Nov. 30, 2023 at Copiah-Lincoln Community College, Mendenhall, where community members learned more about the project and asked questions regarding land, facility operations, environmental, construction, and public outreach
- Public comments collected via printed comment cards, email, and telephone from Nov. 15, 2023 to Dec. 15, 2023

PUBLIC NOTICE
MISSISSIPPI HUB EXPANSION PROJECT
 Mississippi Hub, LLC
 222 Hwy 543 South, Mooreville, MS 39119
www.enstorinc.com
 Docket No. CP24-80-000

March 15, 2024 - Mississippi Hub, LLC (MS Hub) a subsidiary of Enstor Gas, LLC, owns and operates the MS Hub Storage Facility, an underground natural gas storage facility on the Bond Salt Dome in Simpson County, with operations extending into Covington and Jefferson Davis counties, Mississippi.

On March 5, 2024, MS Hub applied to the U.S. Federal Energy Regulatory Commission (FERC) for approval to make modifications to their existing FERC authorized facilities in Simpson, Covington, and Jefferson Davis counties, Mississippi.

The Mississippi Hub Expansion Project (the "Project") consists of expanding the existing working gas storage of Cavern #1 and Cavern #2; the construction of three new gas storage caverns; the expansion of the existing beaching facility; the addition of four new water wells and five saltwater disposal wells; and the installation of additional compression, dehydration, and ancillary facilities required for the MS Hub Storage Facility expansion. Most of the Project components are on MS Hub-owned land (except for two new water wells near the MS Hub Storage Facility and the MS Hub Booster Station in Covington County off Seminary Hill Corner Road). Project information is available at: <https://enstorinc.com/MSHubExpansion>

The MS Hub Storage Facility sits 7.6 miles south of Magee, Mississippi. Pending approvals from FERC and other relevant government bodies, MS Hub intends to begin construction for the Project in early 2025 with a tentative initial in-service date in early 2028.

MS Hub must obtain FERC approval to construct and operate the proposed expansion as FERC holds the authority to issue certificates for the construction and operation of interstate natural gas facilities. FERC assesses whether a proposed project is essential for current and future public convenience and necessity.

Visit the FERC website at: <https://www.ferc.gov/energy/2024/03/15/mississippi-hub-expansion>

There, you'll find details related to the reference guide titled "An Interstate Natural Gas Facility on My Land? What Do I Need to Know?" This brochure explains the FERC approval process as well as the rights of property owners and how project locations are decided. Alternatively, you can reach out to FERC through the FERC Landowner Helpline at 877-337-2237, via email at landownerhelp@ferc.gov or by mail at Commission's Landowner Helpline Federal Energy Regulatory Commission, 888 First Street, NE Washington, DC 20426.

Contact: Todd Cash, Vice President of Compliance & Sustainability, Enstor Gas, LLC
 281.374.3085 | Todd.Cash@EnstorInc.com
MSHExpansionProject@EnstorInc.com
www.enstorinc.com/facilities/mississippi-hub-storage/mshubexpansion